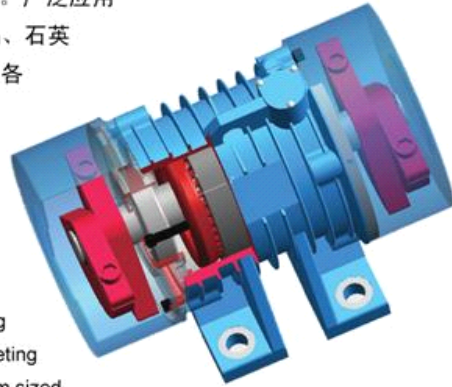


公司主要产品为通用型YZO系列振动电机90多个规格型号。广泛应用于冶金、煤炭、电力、建材、机械、铸造、化工、石油、食品、石英石机械、研磨机械等特制行业及其领域。国内市场覆盖了全国各省市自治区，产品稳步进入跨国公司采购系统，不断完善营销网络必将满足客户全球化的需求。



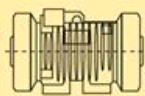
Our main products are universal series YZO Vibrator Motors with more than 90 types. They are widely applied in the fields of metallurgy, coal, electric power, building material, machinery, foundry, chemical industry, petroleum, food industry, quartz stone machinery, grinding machinery, special industry and its areas. Our home and abroad marketing share is increasing year by year and sales network cover all the medium sized and large cities in domestic market and North America, South America, Europe, Australia, South Africa, Mid-east.

Our increasingly perfect marketing network is bound to meet your demands.

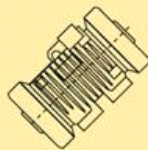
安装形式 & 型号表示方法

Installation of forms and models representation

• 安装形式 Mounting Mode



卧装
Horizontal



任意方向安装
Optional Angle



竖装
Vertical

• 型号表示方法 Type Indication

例
Example



振动电机概况

Brief Introduction vibration motor



振动电机是各类振动机械的通用型激振源，可配套于振动给料机、振动筛、振动输送机、振动落砂机、振动放矿机、振动干燥机和料仓振动防闭塞装置等，广泛应用于矿山冶金、煤碳、电力、建材、机械、铸造、食品、化工、石英石机械、研磨机械等特制行业。

YZO Series vibrator motors are a prime source of applied vibration force to vibrating equipment such as feeders, screens, vibratory conveyors, shake outs, vibratory tables, and follow promoting devices applied to bins and hoppers. YZO Series Vibrator Motors Applied to the above equipment an which are well used in the fields of metallurgy, mining quarry and aggregate, electrical power generation, foodstuff, chemical industries, quartz stone machinery, grinding machinery, special industry and its areas.



YZO系列振动电机

- 1、三相二极 380V 50HZ 振动次数 2900转/分钟
- 2、三相四极 380V 50HZ 振动次数 1430转/分钟
- 3、三相六极 380V 50HZ 振动次数 970转/分钟
- 4、三相八极 380V 50HZ 振动次数 720转/分钟



产品特点

- 设计先进，激振与出力配合适当，重量轻，体积小。
- 全封闭结构，可在无防爆要求的粉尘条件下工作。
- 只需调节偏心块夹角，就可无级调整激振力。
- 可多机组合成各种振动形式，以完成各种作业要求。
- 规格齐全，能满足各种振动机械的工作需要。
- 使用寿命长。

Characteristics of YZO Series Vibrator Motor

- Advanced robust light weighth design with little noise whilst producing efficient centrifugal force with a dequare electrical power.
- The entire sealing system enables YZO Series to op erate in Very dusty environments.
- The centrifugal force is easily and steplessly adjusted with adjusting the angle of the eccentric weights.
- According to your requirement, YZO series vibrator motor can work with multi-macjomesunder proper modes.
- Various specifications can meet different kinds of working requirement of vibratory machines.
- Long service life, low repairing rates.

Vibrator Motors of YZO Series

1. Three-Phase and Two-pole 380v 50HZ Frequency 2900r/min
2. Three-Phase and Four-pole 380v 50HZ Frequency 1430r/min
3. Three-Phase and Six-pole 380v 50HZ Frequency 970r/min
4. Three-Phase and Eight-pole 380v 50HZ Frequency 720r/min



振动电机概况

Brief Introduction vibration motor

产品应用

- 产品应用、矿山、煤炭、建材等领域。
- 应用于旋振筛分机、振动混料机等等。
- 适用于颗粒状的干式筛分及浆料过滤。
- 广泛应用于矿山、耐火材料、粮食等行业。
- 可广泛用于陶瓷、石墨等行业制粉。
- 可供磨料化工等行业中的干式粉状筛分。

振动电机使用条件

- 电源电压频率：380伏50赫兹
- 绝缘等级：B级或F级
- 防护等级：IP54-IP65
- 工作方式：连续
- 环境温度：不超过40°C
- 海拔：不超过1000米

订货须知

- 1、订货时请标明振动电机型号、额定功率、额定激振力、振动次数、安装结构形式等。
- 2、如有特殊要求，经双方协商后，还可供下列特殊要求产品：
 - (1) 特殊电压、频率，如220V、60HZ等。
 - (2) 改变额定功率、额定激振力或安装尺寸等。
 - (3) 带输出轴伸结构。

激振力的调整方法

首先打开电机两端防护罩，电机两端内侧偏心块(即固定偏心块)不动，把外侧偏心块(即可调偏心块)往同一方向调整，调至对应刻度，在二块偏心块重叠时，电机激振力为最大，二块偏心块对称时：激振力为零。如此，任意调整偏心块(可调偏心块)所对应刻度，以达到所需激振力。

Application of YZO Series Vibrator Motor

- Being used in fields of metallurgy, mine, coal, building material etc.
- Being applied in vibratory blender and vibratory shakeout machines etc.
- Being suitable to sift, dry, grained material and slurry.
- Being widely used in the fields of mine, fire-proof material industry and food industry.
- Being widely used to produce powder in the fields of china and graphite.
- Being used to screen out the dry powder in the field of abra sive material chemical industry etc.

Vibrator Motors should be used under the following conditions:

- Voltage: 115-575 V (other voltage is available)
- Frequency: 50or 60 Hz (2, 4, 6 and 8 pole standard)
- Insulated Grade: B or F
- Mechanical Protection: IP 55(Others available on request)
- Working Mode:S1
- Ambient Temperature: <40°C,
- Altitude: <1000 meters

Lubrication: Special selected grease applied at works and do not require further lubrication if used in normal working conditions. In heavy, dusty and wet applications periodical re-lubrication may be required.

Order Notice

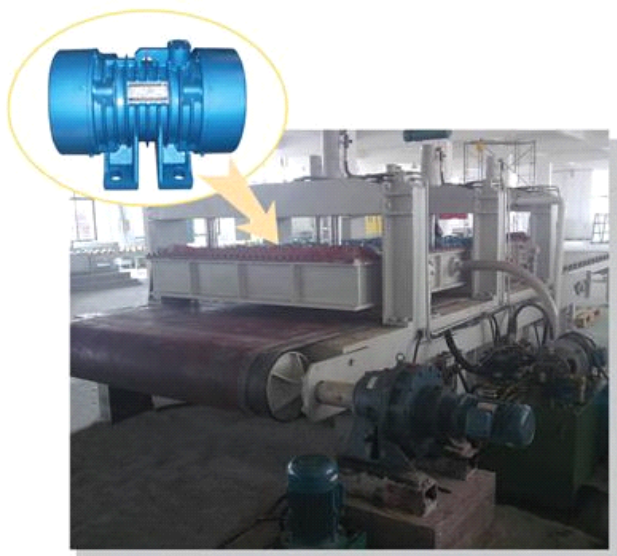
1. Pleasetell us the type, rated power , rated centrifugal force and frequency, revolution and mounting dimensions and other relevant parameters of your required vibrat or motors when you place an order.
2. If you have any special requirement, our engineers can also adjust the rated power, rated voltage, centrifugal force etc.
3. It is also available if you need the structure or output shaft.

Regulation of centrifugal force

First of all take down the protector, Keep the eccentric block (fixed eccentric block) still, The eccentric blocks should rotate in the same direction to regulate the red point of the blocks at required exciting force scale In the two eccentric blocks overlap, the electrical excitation force of the largest and two eccentric blocks of symmetry; exciting force is zero. So, it can adjust its eccentric block (adjustable eccentric blocks) corresponding to the scale in order to achieve the required excitation force.

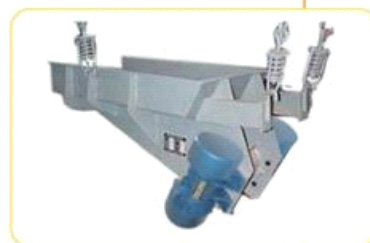
YZO系列振动电机在部分振动机械中的应用实例

YZO series vibration motor mechanical vibration in the part of the application examples



特种振动电机在人造石英石压机中的应用

Special vibration motors in the use of artificial quartz stone presses



立式振动电机在振动研磨机械中的应用

Vertical vibrating motor in the vibration of grinding machine

YZO系列振动电机技术参数及安装尺寸

YZO series of technical parameters and vibration motor installed Size

三相二极 (380V 50HZ 振动次数2900r/min) Three-Phase and Two-pole 380v 50HZ Frequency 2900r/min

| 型号 TYPE | 额定 激振 力 Centrifugal Force (KN) | 额定 功率 Rated Power (KW) | 额定 电流 Rated Current (A) | 安装尺寸 Mounting dimension | | | | | | | | | | 安装 螺栓 尺寸 Mounting bolt dimension | 重量 Weight (KG) | 图号 Drawings No |
|------------|-----------------------------------------------|------------------------------------|-------------------------------------|----------------------------|-----|-----|-----|-----|----|-----|-----|-----|----|----------------------------------------------|----------------------|----------------------|
| | | | | A | B | H | AB | BB | HA | HD | L | CB | K | | | |
| YZOL-0.7-2 | 0.7 | 0.065 | 0.27 | 106 | 68 | 65 | 150 | 105 | 15 | 162 | 220 | | 9 | 4*M8 | 6.8 | 1 |
| YZOL-1-2 | 1 | 0.09 | 0.32 | 106 | 68 | 65 | 150 | 105 | 15 | 162 | 220 | | 9 | 4*M8 | 7.5 | 1 |
| YZOL-2-2 | 2 | 0.18 | 0.65 | 125 | 90 | 75 | 150 | 140 | 15 | 170 | 240 | | 13 | 4*M12 | 8 | 1 |
| YZOL-3-2 | 3 | 0.25 | 0.78 | 125 | 90 | 75 | 150 | 140 | 15 | 170 | 240 | | 13 | 4*M12 | 8.7 | 1 |
| YZO-1-2 | 1 | 0.09 | 0.32 | 120 | 40 | 65 | 150 | 70 | 12 | 155 | 220 | | 10 | 4*M8 | 10 | 1 |
| YZO-2-2 | 2 | 0.18 | 0.65 | 150 | 90 | 80 | 180 | 130 | 13 | 190 | 260 | | 14 | 4*M12 | 16 | 1 |
| YZO-3-2 | 3 | 0.25 | 0.78 | 150 | 90 | 80 | 180 | 130 | 13 | 190 | 260 | | 14 | 4*M12 | 17 | 1 |
| YZO-4-2 | 4 | 0.30 | 0.90 | 150 | 90 | 80 | 180 | 130 | 13 | 190 | 260 | | 14 | 4*M12 | 20 | 1 |
| YZO-5-2 | 5 | 0.37 | 1.10 | 180 | 110 | 90 | 220 | 155 | 18 | 200 | 300 | | 18 | 4*M16 | 25 | 1 |
| YZO-7-2 | 7 | 0.50 | 1.36 | 180 | 110 | 100 | 220 | 155 | 18 | 210 | 310 | | 18 | 4*M16 | 30 | 1 |
| YZO-10-2 | 10 | 0.75 | 1.96 | 220 | 140 | 120 | 265 | 195 | 20 | 230 | 350 | | 22 | 4*M20 | 41 | 2 |
| YZO-16-2 | 16 | 1.10 | 2.55 | 240 | 140 | 135 | 305 | 200 | 22 | 260 | 420 | | 26 | 4*M24 | 65 | 2 |
| YZO-20-2 | 20 | 1.50 | 3.67 | 260 | 150 | 140 | 320 | 215 | 23 | 290 | 440 | | 26 | 4*M24 | 76 | 2 |
| YZO-25-2 | 25 | 2.00 | 4.50 | 260 | 150 | 140 | 320 | 215 | 23 | 290 | 440 | | 26 | 4*M24 | 85 | 2 |
| YZO-30-2 | 30 | 2.20 | 5.10 | 310 | 170 | 160 | 380 | 240 | 30 | 340 | 480 | | 33 | 4*M30 | 105 | 2 |
| YZO-50-2 | 50 | 3.70 | 8.43 | 350 | 220 | 180 | 430 | 300 | 33 | 380 | 530 | | 39 | 4*M36 | 180 | 3 |
| YZO-63-2 | 63 | 4.50 | 10.31 | 380 | 250 | 200 | 455 | 330 | 38 | 400 | 610 | | 39 | 4*M36 | 219 | 3 |
| YZO-80-2 | 80 | 5.50 | 13.15 | 380 | 250 | 200 | 455 | 330 | 38 | 400 | 610 | | 39 | 4*M36 | 234 | 3 |
| YZO-100-2 | 100 | 9.00 | 15.85 | 440 | 280 | 220 | 530 | 380 | 38 | 435 | 690 | | 45 | 4*M42 | 330 | 3 |
| YZO-130-2A | 130 | 12.00 | 22.65 | 540 | 340 | 260 | 635 | 690 | 40 | 560 | 820 | 130 | 39 | 8*M36 | 620 | 6 |

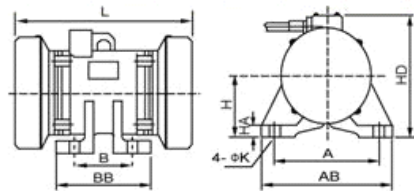


图1 Figure1

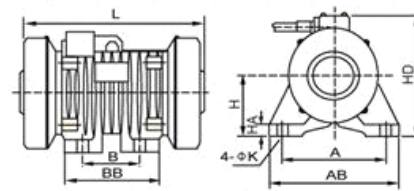


图2 Figure2

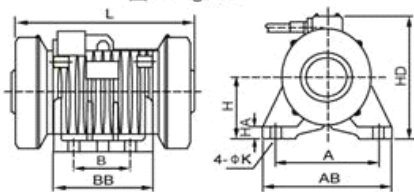


图3 Figure3

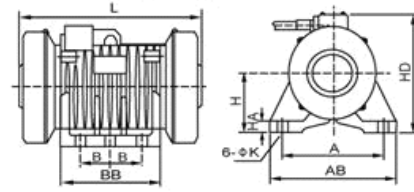


图4 Figure4

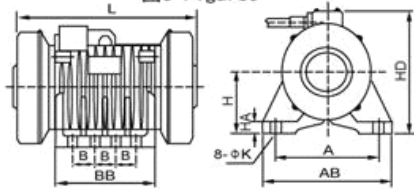


图5 Figure5

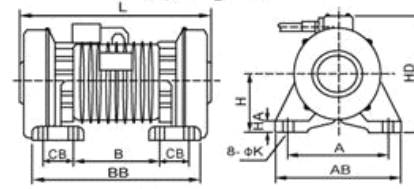


图6 Figure6

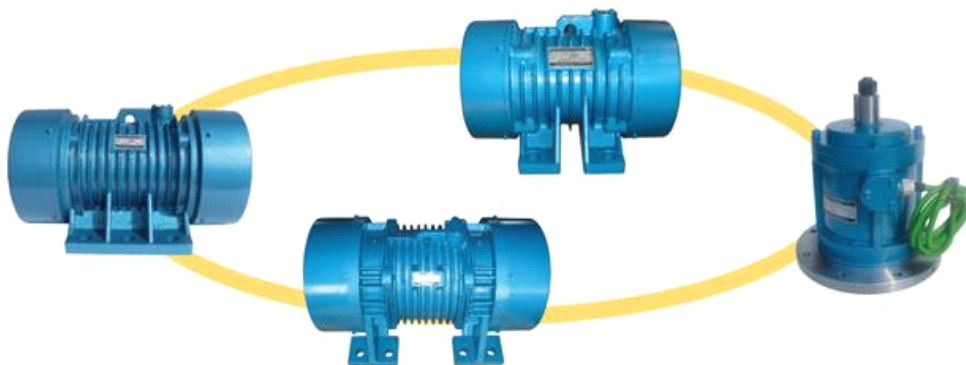
YZO系列振动电机技术参数及安装尺寸

YZO series of technical parameters and vibration motor installed Size



三相四极 (380V 50HZ 振动次数1430r/min) Three-Phase and Hour-pole 380v 50HZ Frequency 1430r/min

| 型号 TYPE | 额定 激振 力 Centrifugal Force (KN) | 额定 功率 Rated Power (KW) | 额定 电流 Rated Current (A) | 安装尺寸 Mounting dimension | | | | | | | | | | 安装 螺栓 尺寸 Mounting bolt dimension | 重量 Weight (KG) | 图号 Drawings No |
|------------|-----------------------------------------------|------------------------------------|-------------------------------------|----------------------------|-----|-----|-----|-----|----|-----|------|-----|----|----------------------------------------------|----------------------|----------------------|
| | | | | A | B | H | AB | BB | HA | HD | L | CB | K | | | |
| YZOL-1-4 | 1 | 0.09 | 0.35 | 106 | 68 | 65 | 150 | 105 | 15 | 162 | 220 | | 9 | 4*M8 | 10.3 | 1 |
| YZOL-2-4 | 2 | 0.12 | 0.49 | 125 | 90 | 75 | 150 | 140 | 15 | 170 | 250 | | 13 | 4*M12 | 11.5 | 1 |
| YZOL-3-4 | 3 | 0.15 | 0.60 | 125 | 90 | 75 | 150 | 140 | 15 | 170 | 250 | | 13 | 4*M12 | 12 | 1 |
| YZO-1-4 | 1 | 0.09 | 0.35 | 120 | 40 | 65 | 150 | 70 | 12 | 155 | 230 | | 10 | 4*M8 | 11 | 1 |
| YZO-2.5-4 | 2.5 | 0.12 | 0.49 | 150 | 90 | 80 | 180 | 130 | 13 | 190 | 250 | | 14 | 4*M12 | 18 | 1 |
| YZO-4-4 | 4 | 0.18 | 0.68 | 150 | 90 | 80 | 180 | 130 | 13 | 190 | 250 | | 14 | 4*M12 | 21 | 1 |
| YZO-5-4 | 5 | 0.25 | 0.85 | 180 | 110 | 90 | 220 | 150 | 18 | 200 | 320 | | 18 | 4*M16 | 27 | 1 |
| YZO-8-4 | 8 | 0.37 | 1.18 | 220 | 140 | 120 | 265 | 195 | 20 | 240 | 360 | | 22 | 4*M20 | 45 | 2 |
| YZO-10-4 | 10 | 0.55 | 1.76 | 220 | 140 | 120 | 265 | 195 | 20 | 240 | 380 | | 22 | 4*M20 | 48 | 2 |
| YZO-13-4 | 13 | 0.65 | 2.07 | 220 | 140 | 120 | 265 | 195 | 20 | 240 | 400 | | 22 | 4*M20 | 57 | 2 |
| YZO-16-4 | 16 | 0.75 | 2.17 | 260 | 150 | 140 | 320 | 215 | 23 | 290 | 430 | | 26 | 4*M24 | 75 | 2 |
| YZO-17-4 | 17 | 0.85 | 2.20 | 240 | 140 | 135 | 305 | 200 | 22 | 260 | 420 | | 26 | 4*M24 | 66 | 2 |
| YZO-20-4 | 20 | 1.10 | 3.20 | 260 | 150 | 140 | 320 | 205 | 23 | 290 | 440 | | 26 | 4*M24 | 81 | 2 |
| YZO-26-4 | 26 | 1.40 | 3.35 | 260 | 150 | 140 | 320 | 205 | 23 | 290 | 440 | | 26 | 4*M24 | 87 | 2 |
| YZO-30-4 | 30 | 1.50 | 3.85 | 310 | 170 | 160 | 380 | 240 | 30 | 330 | 480 | | 33 | 4*M30 | 110 | 2 |
| YZO-40-4 | 40 | 1.85 | 4.50 | 310 | 170 | 160 | 380 | 240 | 30 | 330 | 520 | | 33 | 4*M30 | 135 | 2 |
| YZO-50-4 | 50 | 2.20 | 5.57 | 350 | 220 | 180 | 430 | 300 | 33 | 380 | 530 | | 39 | 4*M36 | 176 | 3 |
| YZO-63-4 | 63 | 3.00 | 7.20 | 350 | 220 | 180 | 430 | 300 | 33 | 390 | 550 | | 39 | 4*M36 | 185 | 3 |
| YZO-80-4 | 80 | 3.70 | 8.90 | 380 | 250 | 200 | 455 | 330 | 38 | 400 | 600 | | 39 | 4*M36 | 260 | 3 |
| YZO-90-4 | 90 | 5.50 | 12.40 | 380 | 250 | 200 | 455 | 330 | 38 | 400 | 600 | | 39 | 4*M36 | 280 | 3 |
| YZO-100-4 | 100 | 6.30 | 14.18 | 440 | 280 | 220 | 530 | 410 | 38 | 435 | 715 | | 45 | 4*M42 | 450 | 3 |
| YZO-130-4 | 130 | 7.50 | 17.01 | 460 | 140 | 250 | 550 | 400 | 40 | 490 | 810 | | 45 | 6*M42 | 590 | 4 |
| YZO-130-4A | 130 | 7.50 | 17.01 | 540 | 340 | 260 | 635 | 690 | 40 | 590 | 890 | 130 | 39 | 8*M36 | 645 | 6 |
| YZO-160-4 | 160 | 10.00 | 22.68 | 460 | 140 | 250 | 550 | 400 | 40 | 490 | 830 | | 45 | 6*M42 | 630 | 4 |
| YZO-160-4A | 160 | 10.00 | 22.68 | 540 | 340 | 260 | 635 | 690 | 40 | 590 | 890 | 130 | 39 | 8*M36 | 690 | 6 |
| YZO-180-4 | 180 | 12.00 | 27.68 | 600 | 120 | 270 | 690 | 510 | 45 | 550 | 950 | | 45 | 8*M42 | 810 | 5 |
| YZO-210-4 | 210 | 16.00 | 31.50 | 600 | 120 | 270 | 690 | 510 | 45 | 550 | 970 | | 45 | 8*M42 | 850 | 5 |
| YZO-250-4A | 250 | 18.00 | 39.05 | 630 | 420 | 300 | 740 | 840 | 48 | 680 | 1060 | 160 | 45 | 8*M42 | 1250 | 6 |
| YZO-300-4A | 300 | 22.00 | 47.66 | 630 | 420 | 300 | 740 | 840 | 48 | 680 | 1170 | 160 | 45 | 8*M42 | 1360 | 6 |



YZO系列振动电机技术参数及安装尺寸

YZO series of technical parameters and vibration motor installed Size

三相六极 (380V 50HZ 振动次数970r/min) Three-Phase and Six-pole 380v 50HZ Frequency 970r/min

| 型号 TYPE | 额定 激振 Centrifugal Force (KN) | 额定 功率 Rated Power (KW) | 额定 电流 Rated Current (A) | 安装尺寸 Mounting dimension | | | | | | | | | | 安装 螺栓 尺寸 Mounting bolt dimension | 重量 Weight (KG) | 图号 Drawings No |
|------------|------------------------------------------|------------------------------------|-------------------------------------|----------------------------|-----|-----|-----|-----|----|-----|------|-----|----|----------------------------------------------|----------------------|----------------------|
| | | | | A | B | H | AB | BB | HA | HD | L | CB | K | | | |
| YZOL-0.7-6 | 0.7 | 0.08 | 0.32 | 106 | 68 | 65 | 150 | 105 | 15 | 162 | 230 | | 9 | 4*M8 | 7.5 | 1 |
| YZOL-1.5-6 | 1.5 | 0.12 | 0.50 | 125 | 90 | 75 | 150 | 140 | 15 | 170 | 250 | | 13 | 4*M12 | 9 | 1 |
| YZO-1.5-6 | 1.5 | 0.12 | 0.50 | 150 | 90 | 80 | 180 | 130 | 13 | 190 | 260 | | 14 | 4*M12 | 18 | 1 |
| YZO-2-6 | 2 | 0.15 | 0.65 | 150 | 90 | 80 | 180 | 130 | 13 | 190 | 260 | | 14 | 4*M12 | 21 | 1 |
| YZO-3-6 | 3 | 0.25 | 0.99 | 180 | 110 | 100 | 220 | 150 | 18 | 210 | 325 | | 18 | 4*M16 | 27 | 1 |
| YZO-5-6 | 5 | 0.37 | 1.37 | 220 | 140 | 120 | 265 | 195 | 20 | 235 | 375 | | 22 | 4*M20 | 48 | 2 |
| YZO-6-6 | 6 | 0.4 | 1.48 | 220 | 140 | 120 | 265 | 195 | 20 | 235 | 390 | | 22 | 4*M20 | 50 | 2 |
| YZO-8-6 | 8 | 0.55 | 2.05 | 240 | 140 | 135 | 305 | 200 | 22 | 260 | 420 | | 26 | 4*M24 | 70 | 2 |
| YZO-10-6 | 10 | 0.75 | 2.47 | 260 | 150 | 140 | 320 | 205 | 23 | 290 | 425 | | 26 | 4*M24 | 78 | 2 |
| YZO-16-6 | 16 | 1.10 | 3.37 | 260 | 150 | 140 | 320 | 215 | 23 | 290 | 485 | | 26 | 4*M24 | 93 | 2 |
| YZO-20-6 | 20 | 1.50 | 4.47 | 310 | 170 | 160 | 380 | 240 | 30 | 330 | 520 | | 33 | 4*M30 | 120 | 2 |
| YZO-26-6 | 26 | 1.85 | 5.58 | 310 | 170 | 160 | 380 | 240 | 30 | 330 | 550 | | 33 | 4*M30 | 131 | 2 |
| YZO-30-6 | 30 | 2.20 | 6.22 | 350 | 220 | 180 | 430 | 290 | 33 | 390 | 550 | | 39 | 4*M36 | 182 | 3 |
| YZO-40-6 | 40 | 3.00 | 8.38 | 350 | 220 | 180 | 430 | 300 | 33 | 390 | 580 | | 39 | 4*M36 | 210 | 3 |
| YZO-50-6 | 50 | 3.70 | 9.37 | 380 | 250 | 200 | 455 | 330 | 35 | 400 | 635 | | 39 | 4*M36 | 267 | 3 |
| YZO-63-6 | 63 | 4.50 | 11.50 | 380 | 250 | 200 | 455 | 330 | 38 | 400 | 670 | | 39 | 4*M36 | 290 | 3 |
| YZO-80-6 | 80 | 5.50 | 13.60 | 440 | 280 | 220 | 530 | 380 | 38 | 435 | 720 | | 45 | 4*M42 | 365 | 3 |
| YZO-100-6 | 100 | 6.30 | 15.58 | 460 | 140 | 220 | 550 | 410 | 40 | 450 | 770 | | 45 | 6*M42 | 430 | 4 |
| YZO-130-6 | 130 | 7.50 | 18.08 | 460 | 140 | 250 | 550 | 450 | 40 | 490 | 855 | | 45 | 6*M42 | 590 | 4 |
| YZO-130-6A | 130 | 7.50 | 18.08 | 540 | 340 | 260 | 635 | 690 | 40 | 560 | 910 | 130 | 39 | 8*M36 | 686 | 6 |
| YZO-150-6 | 150 | 10.00 | 22.89 | 520 | 118 | 250 | 610 | 500 | 42 | 500 | 940 | | 39 | 8*M36 | 750 | 5 |
| YZO-150-6C | 150 | 10.00 | 22.89 | 460 | 118 | 250 | 550 | 470 | 42 | 500 | 940 | | 39 | 8*M36 | 710 | 5 |
| YZO-150-6A | 150 | 10.00 | 22.95 | 540 | 340 | 260 | 635 | 690 | 42 | 590 | 930 | 130 | 39 | 8*M36 | 746 | 6 |
| YZO-160-6 | 160 | 12.00 | 26.84 | 520 | 120 | 270 | 610 | 510 | 45 | 550 | 980 | | 45 | 8*M42 | 825 | 5 |
| YZO-180-6 | 180 | 14.00 | 33.36 | 600 | 120 | 270 | 690 | 510 | 45 | 550 | 980 | | 45 | 8*M42 | 890 | 5 |
| YZO-180-6C | 180 | 14.00 | 33.36 | 520 | 120 | 270 | 610 | 510 | 45 | 550 | 1000 | | 45 | 8*M42 | 860 | 5 |
| YZO-210-6 | 210 | 16.00 | 36.93 | 520 | 120 | 270 | 610 | 510 | 45 | 550 | 1040 | | 45 | 8*M42 | 950 | 5 |
| YZO-250-6A | 250 | 18.00 | 43.39 | 630 | 420 | 300 | 740 | 840 | 48 | 680 | 1170 | 160 | 45 | 8*M42 | 1250 | 6 |
| YZO-300-6A | 300 | 22.00 | 52.96 | 630 | 420 | 300 | 740 | 840 | 48 | 680 | 1210 | 160 | 45 | 8*M42 | 1320 | 6 |



YZO系列振动电机技术参数及安装尺寸

YZO series of technical parameters and vibration motor installed Size



三相八极 (380V 50HZ 振动次数720r/min) Three-Phase and Eight-pole 380v 50HZ Frequency 720r/min

| 型号 TYPE | 额定 激振 Centrifugal Force (KN) | 额定 功率 Rated Power (KW) | 额定 电流 Rated Current (A) | 安装尺寸 Mounting dimension | | | | | | | | | | 安装 螺栓 尺寸 Mounting bolt dimension | 重量 Weight (KG) | 图号 Drawings No |
|------------|------------------------------------------|------------------------------------|-------------------------------------|----------------------------|-----|-----|-----|-----|----|-----|------|-----|----|----------------------------------------------|----------------------|----------------------|
| | | | | A | B | H | AB | BB | HA | HD | L | CB | K | | | |
| YZO-1.5-8 | 1.5 | 0.18 | 0.85 | 180 | 110 | 90 | 220 | 150 | 18 | 200 | 320 | | 18 | 4*M16 | 28 | 1 |
| YZO-3-8 | 3 | 0.25 | 1.18 | 220 | 140 | 120 | 265 | 195 | 20 | 230 | 410 | | 22 | 4*M20 | 60 | 2 |
| YZO-5-8 | 5 | 0.37 | 1.75 | 260 | 150 | 140 | 320 | 205 | 23 | 290 | 450 | | 26 | 4*M24 | 80 | 2 |
| YZO-10-8 | 10 | 0.75 | 2.78 | 310 | 170 | 160 | 380 | 240 | 30 | 340 | 520 | | 33 | 4*M30 | 120 | 2 |
| YZO-16-8 | 16 | 1.10 | 4.07 | 310 | 170 | 160 | 380 | 240 | 30 | 340 | 520 | | 33 | 4*M30 | 140 | 2 |
| YZO-20-8 | 20 | 1.50 | 4.93 | 350 | 220 | 180 | 430 | 290 | 33 | 380 | 550 | | 39 | 4*M36 | 182 | 3 |
| YZO-30-8 | 30 | 2.20 | 6.70 | 380 | 250 | 200 | 460 | 330 | 35 | 400 | 635 | | 39 | 4*M36 | 270 | 3 |
| YZO-50-8 | 50 | 3.70 | 9.80 | 440 | 280 | 220 | 530 | 380 | 38 | 435 | 720 | | 45 | 4*M42 | 370 | 3 |
| YZO-63-8 | 63 | 4.50 | 11.58 | 460 | 140 | 220 | 550 | 410 | 40 | 450 | 770 | | 45 | 6*M42 | 440 | 4 |
| YZO-80-8 | 80 | 5.50 | 14.15 | 460 | 140 | 250 | 550 | 400 | 40 | 490 | 770 | | 45 | 6*M42 | 600 | 4 |
| YZO-80-8A | 80 | 5.50 | 14.15 | 540 | 340 | 260 | 635 | 690 | 40 | 560 | 910 | 130 | 39 | 8*M36 | 686 | 6 |
| YZO-100-8 | 100 | 6.30 | 16.60 | 460 | 140 | 250 | 550 | 400 | 40 | 490 | 810 | | 45 | 6*M42 | 650 | 4 |
| YZO-100-8A | 100 | 6.30 | 16.60 | 540 | 340 | 260 | 635 | 690 | 40 | 560 | 910 | 130 | 39 | 8*M36 | 760 | 6 |
| YZO-140-8 | 140 | 10.00 | 26.05 | 600 | 120 | 270 | 690 | 510 | 45 | 550 | 1000 | | 45 | 8*M42 | 910 | 5 |
| YZO-160-8 | 160 | 12.00 | 31.26 | 600 | 120 | 270 | 690 | 510 | 45 | 550 | 1040 | | 45 | 8*M42 | 960 | 5 |
| YZO-200-8A | 200 | 14.00 | 39.86 | 630 | 420 | 300 | 740 | 840 | 48 | 680 | 1210 | 160 | 45 | 8*M42 | 1390 | 6 |
| YZO-250-8A | 250 | 18.00 | 51.40 | 630 | 420 | 300 | 740 | 840 | 48 | 680 | 1270 | 160 | 45 | 8*M42 | 1460 | 6 |

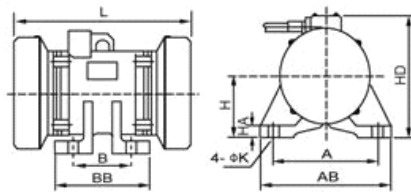


图1 Figure1

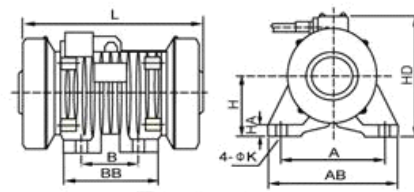


图2 Figure2

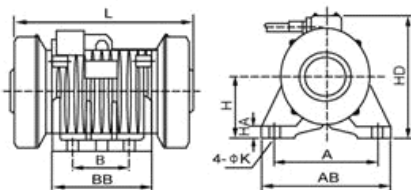


图3 Figure3

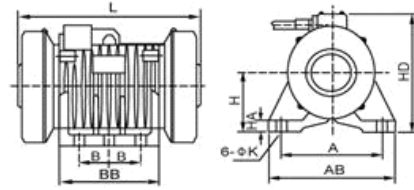


图4 Figure4

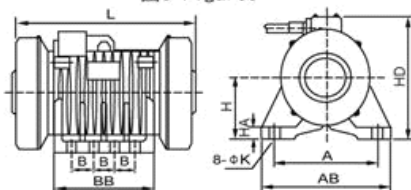


图5 Figure5

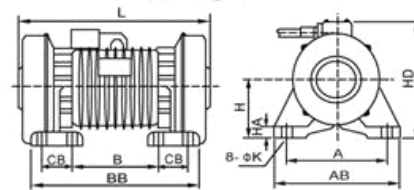


图6 Figure6

YZF系列放矿机电机技术参数及安装尺寸

YZF series Ore machine special motor technology parameters and installation dimensions

三相四极 (380V 50HZ 振动次数1430r/min) Three-Phase and Four-pole 380v 50HZ Frequency 1430r/min

| 型号 TYPE | 额定 激振 Centrifugal Force (KN) | 额定 功率 Rated Power (KW) | 额定 电流 Rated Current (A) | 安装尺寸 Mounting dimension | | | | | | | | | 安装 螺栓 尺寸 Mounting bolt dimension | 重量 Weight (KG) | 图号 Drawings No |
|------------|------------------------------------------|------------------------------------|-------------------------------------|----------------------------|-----|-----|-----|-----|----|-----|-----|----|----------------------------------------------|----------------------|----------------------|
| | | | | A | B | H | AB | BB | HA | HD | L | K | | | |
| YZF-5-4 | 5 | 0.55 | 1.50 | 180 | 110 | 90 | 220 | 150 | 18 | 200 | 320 | 18 | 4*M16 | 27 | 1 |
| YZF-7.5-4 | 7.5 | 0.75 | 2.10 | 220 | 140 | 120 | 265 | 195 | 20 | 240 | 360 | 22 | 4*M20 | 45 | 2 |
| YZF-10-4 | 10 | 1.10 | 3.00 | 220 | 140 | 120 | 265 | 195 | 20 | 240 | 380 | 22 | 4*M20 | 48 | 2 |
| YZF-15-4 | 15 | 1.50 | 4.10 | 260 | 150 | 140 | 320 | 215 | 23 | 290 | 430 | 26 | 4*M24 | 75 | 2 |
| YZF-20-4 | 20 | 2.20 | 6.10 | 260 | 150 | 140 | 320 | 205 | 23 | 290 | 440 | 26 | 4*M24 | 81 | 2 |
| YZF-30-4 | 30 | 3.00 | 7.50 | 310 | 170 | 160 | 380 | 240 | 30 | 330 | 480 | 33 | 4*M30 | 110 | 2 |
| YZF-40-4 | 40 | 4.00 | 9.90 | 310 | 170 | 160 | 380 | 240 | 30 | 330 | 520 | 33 | 4*M30 | 135 | 2 |
| YZF-50-4 | 50 | 5.50 | 12.30 | 350 | 220 | 180 | 430 | 300 | 33 | 380 | 530 | 39 | 4*M36 | 176 | 3 |
| YZF-60-4 | 60 | 7.50 | 15.70 | 350 | 220 | 180 | 430 | 300 | 33 | 390 | 550 | 39 | 4*M36 | 185 | 3 |
| YZF-75-4 | 75 | 10.00 | 20.60 | 380 | 250 | 200 | 455 | 330 | 38 | 400 | 600 | 39 | 4*M36 | 260 | 3 |

三相六极 (380V 50HZ 振动次数970r/min) Three-Phase and Six-pole 380v 50HZ Frequency 970r/min

| 型号 TYPE | 额定 激振 Centrifugal Force (KN) | 额定 功率 Rated Power (KW) | 额定 电流 Rated Current (A) | 安装尺寸 Mounting dimension | | | | | | | | | 安装 螺栓 尺寸 Mounting bolt dimension | 重量 Weight (KG) | 图号 Drawings No |
|------------|------------------------------------------|------------------------------------|-------------------------------------|----------------------------|-----|-----|-----|-----|----|-----|-----|----|----------------------------------------------|----------------------|----------------------|
| | | | | A | B | H | AB | BB | HA | HD | L | K | | | |
| YZF-6.5-6 | 6.5 | 0.75 | 2.10 | 220 | 140 | 120 | 265 | 195 | 20 | 235 | 390 | 22 | 4*M20 | 46 | 2 |
| YZF-8-6 | 8 | 1.10 | 3.10 | 240 | 140 | 135 | 305 | 200 | 22 | 260 | 420 | 26 | 4*M24 | 70 | 2 |
| YZF-10-6 | 10 | 1.50 | 4.30 | 260 | 150 | 140 | 320 | 205 | 23 | 290 | 425 | 26 | 4*M24 | 78 | 2 |
| YZF-16-6 | 16 | 2.20 | 6.20 | 260 | 150 | 140 | 320 | 215 | 23 | 290 | 485 | 26 | 4*M24 | 93 | 2 |
| YZF-25-6 | 25 | 3.00 | 8.10 | 310 | 170 | 160 | 380 | 240 | 30 | 330 | 550 | 33 | 4*M30 | 131 | 2 |
| YZF-35-6 | 35 | 4.00 | 9.70 | 350 | 220 | 180 | 430 | 300 | 33 | 390 | 580 | 39 | 4*M36 | 210 | 3 |
| YZF-40-6 | 40 | 5.50 | 13.20 | 400 | 120 | 180 | 465 | 310 | 33 | 390 | 600 | 33 | 6*M30 | 222 | 4 |
| YZF-50-6 | 50 | 7.50 | 18.50 | 380 | 125 | 200 | 455 | 330 | 35 | 400 | 635 | 39 | 6*M36 | 267 | 4 |
| YZF-60-6 | 60 | 10.00 | 22.70 | 380 | 125 | 200 | 460 | 330 | 38 | 400 | 670 | 39 | 6*M36 | 290 | 4 |
| YZF-75-6 | 75 | 11.00 | 24.60 | 440 | 140 | 220 | 530 | 380 | 38 | 435 | 720 | 45 | 6*M42 | 365 | 4 |
| YZF-100-6 | 100 | 15.00 | 34.80 | 460 | 140 | 220 | 550 | 410 | 40 | 450 | 770 | 45 | 6*M42 | 430 | 4 |

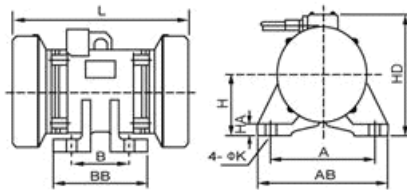


图1 Figure1

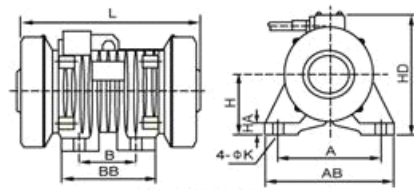


图2 Figure2

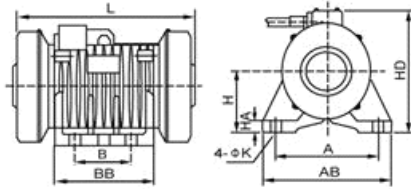


图3 Figure3

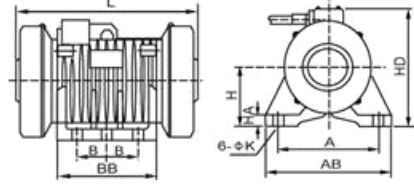
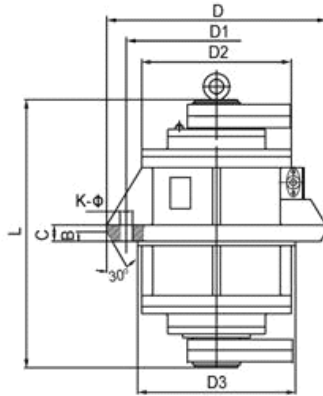
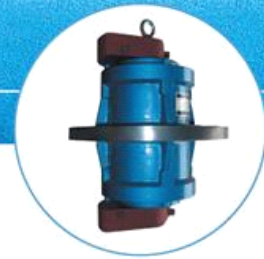


图4 Figure4

YZL立式振动电机技术参数及安装尺寸

YZL vertical vibrating motor technical data and installation dimensions



本系列振动电机由立式电机和激振源构成，所产生的回旋激振力通过电机圆锥面传给振动机械，使振动机械产生旋型圆振动和空间摇晃振动的复合工况，可作为各种振动筛，振动磨料机，振动光饰处理机，振动混料机等平旋型或复旋型振动机械的激振源。

YZL series vibrator motor, integrated vertical motor with vibrating mechanism, generat whirlingforce and transmit to vibratory machines through the taper surface of motor, enable vibratory machin to generate compound working mode consisted of whirling vibration and swinging vibration. It can be applied in vibratory screen, vibratory grinder, vibratory finishing machines, and vibratory mixer etc.

YZL立式振动电机技术参数及安装尺寸

三相四极 (380V 50HZ 振动次数1430r/min) Three-Phase and Four-pole 380v 50HZ Frequency 1430r/min

| 型号 TYPE | 额定 激振 Centrifugal Force (KN) | 额定 功率 Rated Power (KW) | 额定 电流 Rated Current (A) | 安装尺寸 Mounting dimension | | | | | | |
|------------|------------------------------------------|------------------------------------|-------------------------------------|----------------------------|-----|-----|-----|-----|------|----|
| | | | | D | D1 | D2 | D3 | L | K-φ | C |
| YZL-20-4 | 20 | 1.50 | 3.70 | 370 | 325 | 256 | 280 | 425 | 6-22 | 22 |
| YZL-25-4 | 25 | 1.80 | 4.20 | 370 | 325 | 256 | 280 | 425 | 6-22 | 22 |
| YZL-32-4 | 32 | 2.20 | 5.20 | 405 | 365 | 292 | 320 | 495 | 6-22 | 25 |
| YZL-45-4 | 45 | 3.70 | 8.70 | 500 | 420 | 346 | 370 | 520 | 8-26 | 30 |
| YZL-52-4 | 52 | 5.00 | 11.50 | 500 | 420 | 346 | 370 | 520 | 8-26 | 30 |
| YZL-63-4 | 63 | 5.50 | 13.30 | 500 | 420 | 346 | 370 | 520 | 8-26 | 30 |
| YZL-100-4 | 100 | 11.00 | 23.80 | 580 | 510 | 420 | 440 | 690 | 8-33 | 40 |

三相六极 (380V 50HZ 振动次数970r/min) Three-Phase and Six-pole 380v 50HZ Frequency 970r/min

| 型号 TYPE | 额定 激振 Centrifugal Force (KN) | 额定 功率 Rated Power (KW) | 额定 电流 Rated Current (A) | 安装尺寸 Mounting dimension | | | | | | |
|---------------|------------------------------------------|------------------------------------|-------------------------------------|----------------------------|-----|-----|-----|-----|------|----|
| | | | | D | D1 | D2 | D3 | L | K-φ | C |
| YZL - 10 - 6 | 10 | 0.75 | 2.47 | 370 | 325 | 256 | 280 | 425 | 6-22 | 22 |
| YZL - 16 - 6 | 16 | 1.10 | 3.37 | 370 | 325 | 256 | 280 | 465 | 6-22 | 22 |
| YZL - 20 - 6 | 20 | 1.50 | 4.47 | 405 | 365 | 292 | 320 | 495 | 6-22 | 25 |
| YZL - 26 - 6 | 26 | 1.85 | 5.58 | 405 | 365 | 292 | 320 | 520 | 6-22 | 25 |
| YZL - 30 - 6 | 30 | 2.20 | 6.22 | 500 | 420 | 346 | 370 | 520 | 8-26 | 30 |
| YZL - 40 - 6 | 40 | 3.00 | 8.38 | 500 | 420 | 346 | 370 | 570 | 8-26 | 30 |
| YZL - 50 - 6 | 50 | 3.70 | 9.37 | 540 | 460 | 380 | 405 | 630 | 8-26 | 35 |
| YZL - 63 - 6 | 63 | 4.50 | 11.50 | 540 | 460 | 380 | 405 | 650 | 8-26 | 35 |
| YZL - 80 - 6 | 80 | 5.50 | 13.60 | 580 | 510 | 420 | 440 | 690 | 8-33 | 40 |
| YZL - 100 - 6 | 100 | 6.30 | 15.58 | 580 | 510 | 420 | 440 | 750 | 8-33 | 40 |
| YZL - 130 - 6 | 130 | 7.50 | 18.08 | 650 | 580 | 480 | 510 | 840 | 8-39 | 45 |
| YZL - 180 - 6 | 180 | 14.00 | 33.36 | 700 | 625 | 520 | 550 | 910 | 8-45 | 45 |